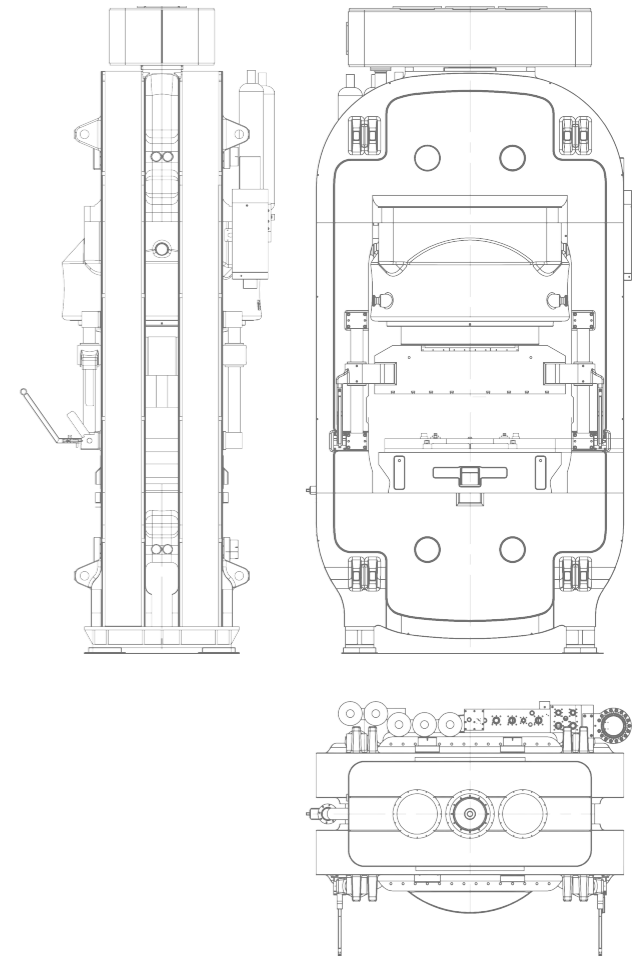


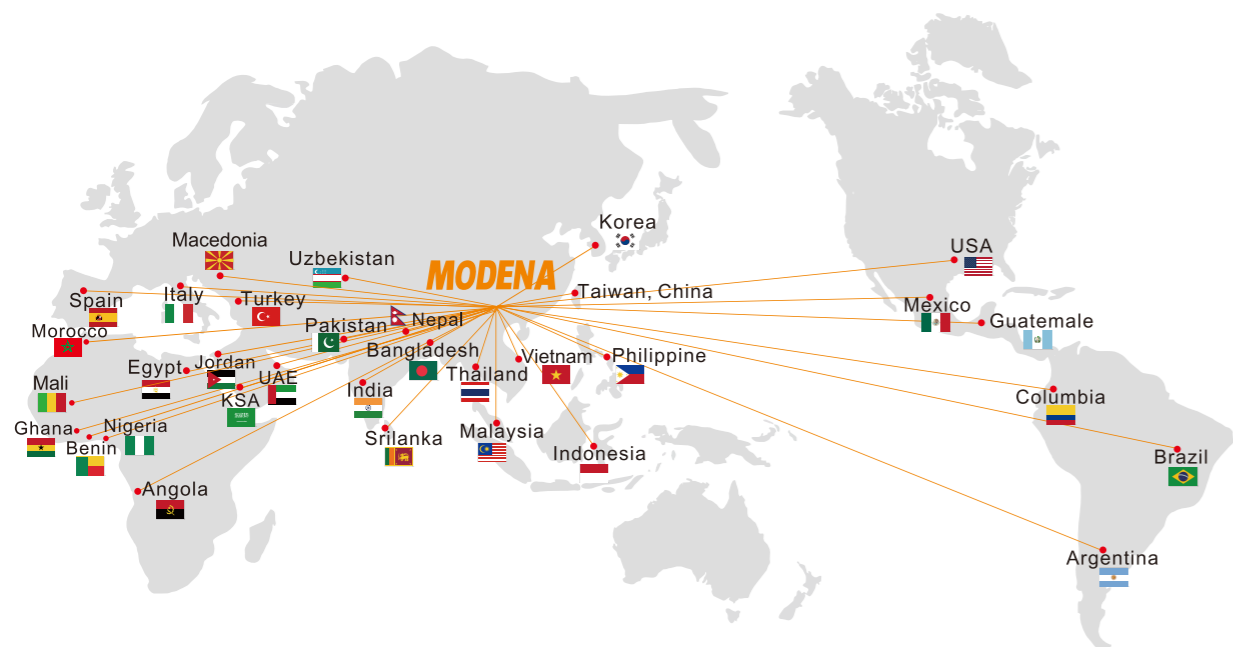
成型设备

HYDRAULIC PRESS



来自世界各地的肯定

APPROVAL FROM ALL OVER THE WORLD



<p>2003</p> <p>佛山市摩德娜机械有限公司（广东摩德娜科技股份有限公司前身）注册成立。</p> <p>Foshan City Modena Machinery Co., Ltd. (predecessor of Modena Technology Ltd.) was established.</p>	<p>2008</p> <p>3000平方米的新办公大楼投入使用。</p> <p>New office building of 3,000 m² put into operation.</p>	<p>2010</p> <p>佛山市摩德娜机械有限公司通过CE认证，同年获评定为“广东省高新技术企业”。</p> <p>Modena qualified for CE certification and ranked as "Provincial new hi-tech enterprise".</p>	<p>2011</p> <p>摩德娜全资子公司新兴县摩德娜机械有限公司（占地150亩）在广东省云浮市新兴县新城工业园奠基。</p> <p>Wholly-owned subsidiary of Modena, Xinxing Modena Machinery Limited, laid its foundation in Xincheng Industrial Park in Xinxing Town, Yunfu City, Guang-dong Province, covers 100,000sqm area.</p>	<p>2012</p> <p>摩德娜MFS-305型大规格抛光砖用高效节能宽体窑获国家科学技术部评定为“国家重点新产品”。</p> <p>Modena's MFS-305 high-efficiency wide-body kiln for polished tiles was awarded as "National Key and New Product" by the Ministry of Science and Technology.</p>	<p>2015</p> <p>摩德娜自主研发辊道窑新型节能系统RCH获得国家技术专利（ZL201510927025.0）。</p> <p>The very first Double-decker kiln for large-format sintered slab production line in Asia, supplied by Modena to LIOLI, was put into production successfully.</p>	<p>2017</p> <p>摩德娜成功研发并推出新型电子空燃比(ADC)系统并获得国家专利（ZL201711461351.2）。极大程度地赋予辊道窑以更大的生产弹性和更高层次的自动化水平，并在能耗上达到了390kcal/kg(瓷质砖)，为国际先进水平。</p> <p>Modena researched and developed its all-new Air/Gas Smart Control system (ADC) and obtained National Patent (No. ZL201711461351.2). The ADC system empowers the roller kiln with more productivity and higher level of automation, gas consumption reaches 390kcal/kg (for vitrified products) which is at the international leading level.</p>	<p>2018</p> <p>亚洲首条双层大规模岩板窑炉生产线在印度LIOLI工厂一次性投产成功，整线热工设备由摩德娜提供。</p> <p>The very first Double-decker kiln for large-format sintered slab production line in Asia, supplied by Modena to LIOLI, was put into production successfully.</p>	<p>2020</p> <p>在中国岩板爆发的元年，摩德娜得到多家国内陶瓷头部企业（蒙娜丽莎，东鹏和金牌等）的青睐，供应多条INFINITY系列双层岩板窑炉和多层干燥器。截止2020年9月，亚洲区域的所有双层岩板窑炉（超过9条）均为摩德娜制造。</p> <p>The year of 2020 is the year of Sintered Slab in China, Modena's INFINITY series thermal equipment (the Double-decker kilns and multilayer dryers) enjoyed the most popularity from the top brands (Monalisa, Dongpeng, Goldmedal etc.). Till September 2020, all the Double-decker kilns for sintered slab in Asia are provided by Modena (more than 9 lines).</p>	<p>2021</p> <p>在后疫情时代，摩德娜整体营业收入创下历史记录。在出口市场尤为突出，3352个货柜的年度出货量冠绝行业，覆盖全球各大陶瓷产区，且以“全窑型”的全面数据回答了新时代的问卷。</p> <p>In the post epidemic era, Modena set a historical record of annual turnover. It is particularly prominent in the overseas market. The annual shipment of 3,352 containers is the largest in the industry, covering all major ceramic zones in the world, and has answered the questionnaire of the new era with the a Full Slam of kiln models.</p>	<p>2022</p> <p>摩德娜与霍尼韦尔达成氢能应用战略合作，共同开发陶瓷行业低碳燃烧技术。此举不仅响应国家“双碳”目标，更推动窑炉清洁能源结构的革命性突破，为全球陶瓷产业低碳发展提供了创新解决方案。</p> <p>Modena and Honeywell established a strategic partnership in hydrogen energy applications to jointly develop low-carbon combustion technologies for the ceramic industry. This initiative not only aligns with China's "Dual Carbon" goals but also drives a revolutionary breakthrough in the clean energy structure of kilns, providing innovative solutions for the global ceramic industry's low-carbon development.</p>	<p>2023</p> <p>摩德娜与新玻尔合作的10万m²/天超大产量中板窑炉生产线成功实现规模化量产，通过创新的生产架构和优化的热工系统，提供了更高效率、更稳定的生产解决方案，创下全球窑炉单线产能新纪录！</p> <p>Modena and XinBoer successfully achieved mass production with their groundbreaking 100,000 m²/day porcelain tile kiln production line. Featuring an innovative production architecture and optimized thermal system, this project delivers unprecedented efficiency and production stability, setting a new world record for single-line kiln capacity in the ceramic industry.</p>	<p>2024</p> <p>摩德娜与赣锋锂业合作的碳酸锂项目成功启动，通过独特的连续煅烧方式实现矿物中锂元素的释放与转化，展现了摩德娜技术的跨界应用，标志着摩德娜向多元化热工装备服务商的转型迈出关键一步。</p> <p>Modena and Ganfeng Lithium successfully launched their lithium carbonate project. The innovative continuous calcination technology enables efficient lithium extraction and conversion, demonstrating Modena's cross-industry technological capabilities. This milestone marks a crucial step in Modena's transformation into a diversified thermal equipment solutions provider.</p>
--	---	--	---	--	---	--	--	---	--	--	---	--

炉火纯青 Mastered Fire Engineered Excellence

自成立以来，摩德娜已为海内外市场客户提供了过千条陶瓷生产线，均得到了客户的认可。数字还在继续增加中.....

More than 1,000 production lines have been successfully supplied by Modena in both domestic and overseas market and approved by the customers. And the counting still goes on

ABOUT US

关于我们



2003

成立于2003年

中国最大的窑炉和陶瓷整线生产装备出口企业

广东摩德娜科技股份有限公司（原佛山市摩德娜机械有限公司，以下简称“公司”）成立于2003年，是一家专业从事建筑陶瓷、日用瓷、卫生瓷及特种陶瓷的整线设备研发、生产、销售与售后服务的高新技术企业。摩德娜是中国领先的陶瓷窑炉设备供应商，以热工设备为核心，同时配套原料制备车间，成型设备及施釉输送设备，带动整线成套陶瓷生产装备出口。产品除了销往全国中高端市场外，还远销越南、美国、印度、泰国、台湾地区、印尼、马来西亚、孟加拉国、沙特阿拉伯、阿联酋、巴基斯坦、土耳其、埃及、墨西哥、哥伦比亚等国家和地区；为中国陶瓷设备，尤其是热工设备在国际市场上赢得了良好的品牌和声誉，连续多年成为中国最大的热工设备和陶瓷整线生产装备出口企业。

在面对全球陶瓷产品市场的激烈竞争，陶瓷制造商对产品品质与量优化强烈需求，以及当今社会对自动化生产设备与日俱增的需求和依赖，我司于2017年正式开始与意大利公司联合打造集中意两国技术优势的墙地砖压机：这些压机电气系统和液压控制系统由意大利公司设计与制造，主机及机械部分由摩德娜公司掌控并保证质量。如此引进意大利液压控制技术和整套意大利电气控制系统，为未来压机的发展提供技术解决方案和给制造商高产，高质，高稳定性的生产提供保障。

Modena Technology Limited (formerly Foshan Modena Machinery Co., Ltd., hereinafter referred to as "the company") was established in 2003. It is a high-tech enterprise specializing in R & D, manufacturing, sales and after-sales service of ceramic machinery equipment. Modena is a leading supplier of ceramic firing equipment in China. With thermal equipment as the core, the company is supplying raw material preparation equipment, forming equipment and glazing and conveying equipment to drive the export of complete solution of ceramic production line machinery. In addition to the China domestic high-end market, our products are also exported to South Korea, the United States, India, Vietnam, Bangladesh, Pakistan, Thailand, Taiwan, Indonesia, Malaysia, the United Arab Emirates, Turkey, Egypt, Mexico, Colombia and other countries and regions, winning a good brand reputation for Chinese ceramic equipment, especially our thermal equipment in the international market.

It has become China's largest thermal equipment and ceramic production line equipment export-oriented manufacturer for years. Facing the fierce competition in the global ceramic product market, ceramic manufacturers have a strong demand for product quality and optimization, and today's society has a growing demand and dependence on automatic production equipment. In 2017, our company officially started to work with Italian companies to design and manufacture the presses for ceramic tiles with Italian technical advantages: the electrical and hydraulic control system of these presses are developed by our Italian partner, and the main body and mechanical parts are manufactured by Modena with quality guarantee. By introducing the advanced Italian hydraulic control technology and hydraulic system, Modena will provide the complete technical solutions to the customers with higher productivity, better quality and stability.

SINCE
2003

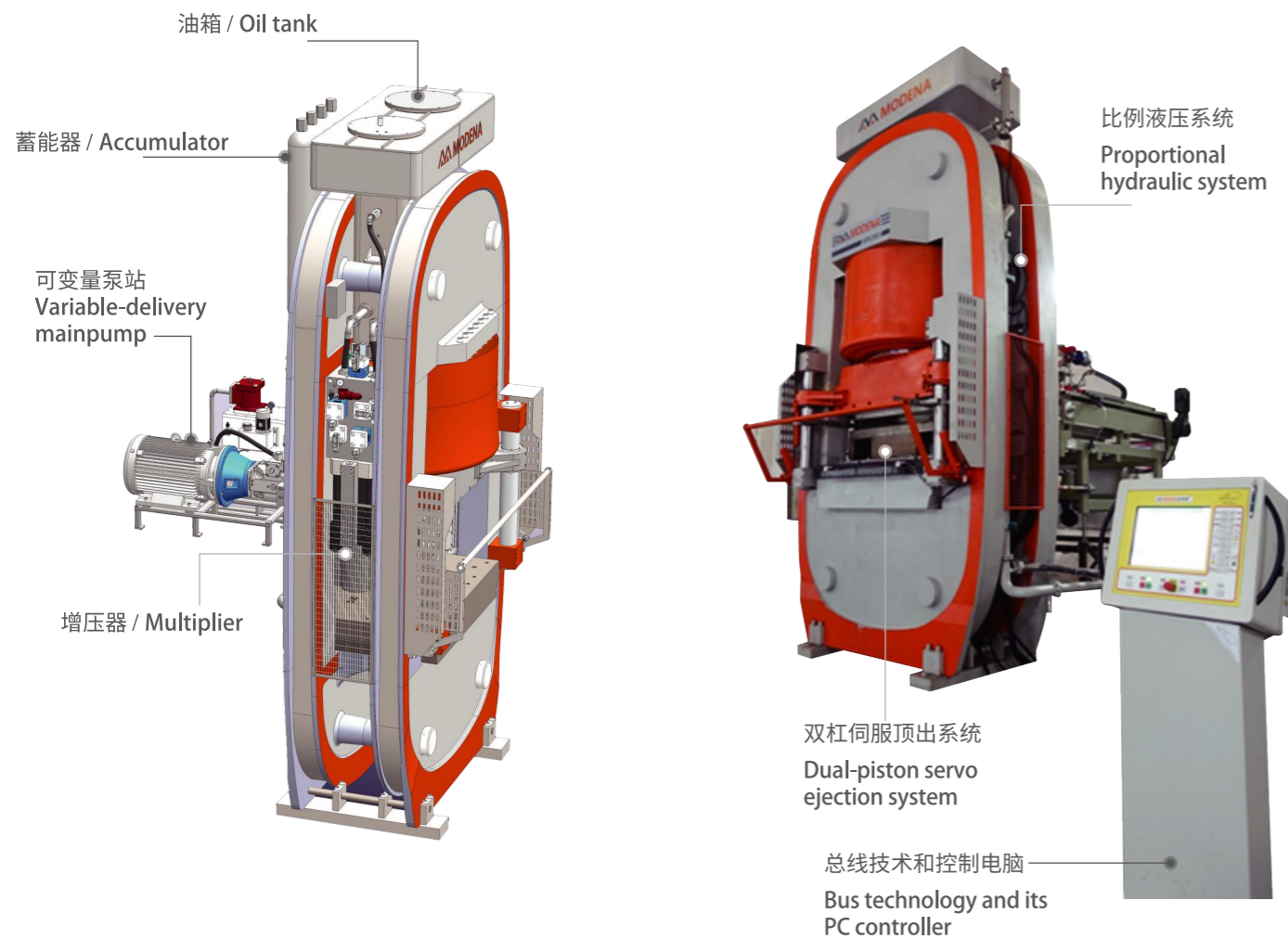
MPE SERIES

新设计、新技术、新一代
智能压机

MPE系列是摩德娜和意大利公司共同开发的新一代液压机，重大的技术革新引进和创新简洁的外观集于一身。

Newly restyled, technically improved
Hydraulic press

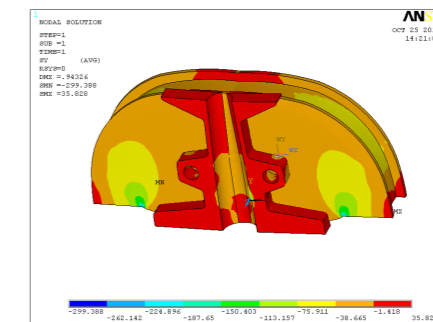
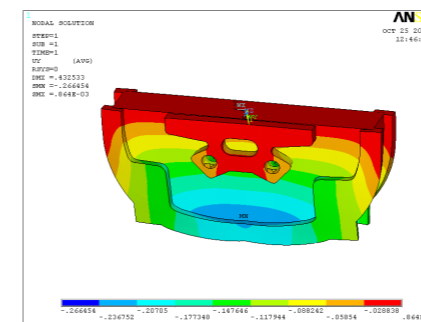
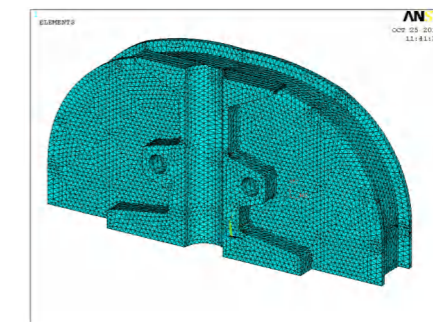
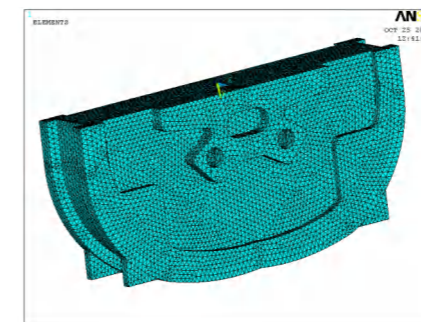
The MPE series is a latest generation of hydraulic presses, developed under cooperation by Modena and Italian technical team, concentrating the technology evolvement and creative styling with neat design in one body.



■ 框架 / Press Frame

压机主体结构采用新型预应力钢丝双缠绕结构，设计时应用了有限元技术进行优化；压机的立柱、上横梁、下横梁应用预应力钢丝缠绕技术固结在一起，形成封闭的预应力框板，使预应力结构的梁体得到大大简化，应力集中少，机架刚度足，具有超强的抗疲劳性能和承载稳定性。

The main-body of the press adopts a new type of pre-loaded double-wiring structure, which is optimized by finite element technology during design; The columns, upper and lower beam of the press are consolidated by pre-loaded steel wiring technology to form a closed pre-stress frame, greatly simplified the pre-loaded structure and lessen the stress concentration. It guarantees the rigidity of the frame, and a superior fatigue resistance and bearing stability.



—
新型预应力
钢丝双缠绕

Pre-loaded
double wiring
structure

—
超强

抗疲劳性能、承载稳定性

Fatigue resistance
and bearing stability

重复控制

保证密度均匀、厚度相同

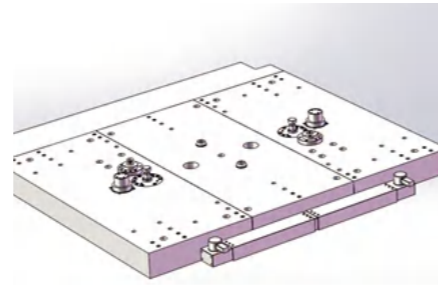
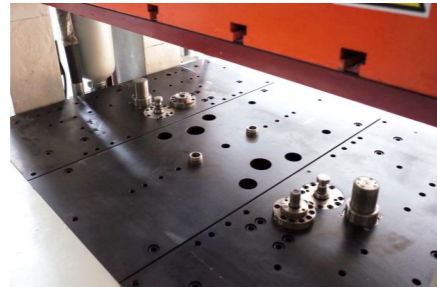
PC-PLC CONTROL

Precise consistent control on density and thickness

■ 双缸伺服顶出系统 / Dual-piston servo proportional ejection

通过PC-PLC自动控制系统，保证所压制的每块砖坯（无论大尺寸或小尺寸）密度均匀，厚度相同并重复控制。新型的双缸伺服顶出优化来油路和控制程序，提高了生产效率和更大推动力。

By automatic control system basing on PC-PLC platform, the dual-piston proportional ejection system ensure the highly repeatability of pressing force on each tiles, thus the density evenness and thickness conformity are under controlled. The optimized hydraulic circuit and evolved program greatly improve the working efficiency and ejection force of this system.



■ 压制油缸 / Oil cylinder

压制油缸是正立双作用的活塞缸，由整体合金锻钢件加工而成，特殊的锻造工艺使其具有极强的钢性，缸体变形的可能性极低。

The press applies the upright double-acting piston cylinder. It is made of integral alloy forgings. The special producing process makes the cylinder extremely strong and makes the deformation of the cylinder almost impossible to occur.



压制油缸

合金锻钢件
极强钢性、变形极低

Alloy forging

High rigidity and extreme low deformation

■ 液压系统 / Hydraulic system

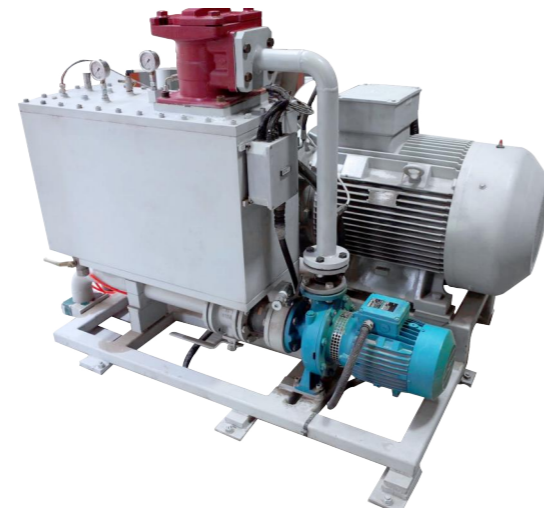
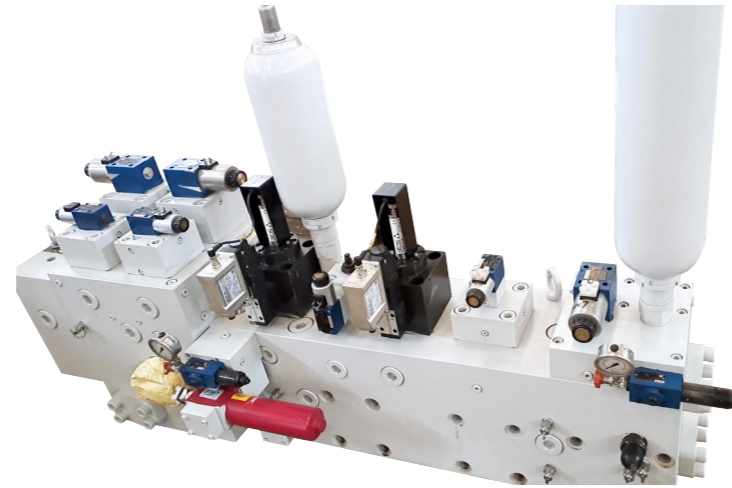
液压系统是经意大利设计师精心设计的，优化后采用最少的阀件和采用目前世界上最先进的液压控制技术和先进的液压元件（比例伺服泵、逻辑阀、伺服比例阀）。横梁、顶出，加压和增压的动作应用了伺服比例闭环控制技术，确保性能优良，稳定可靠。

The hydraulic system was dedicately-designed by the Italian designers. The hydraulic system was optimized by using the least valves, the world' s most advanced hydraulic control technology and hydraulic components. Servo proportional closed loop control technology is applied on the plunger,ejector, pressurization and boosting action to ensure excellent performance.

MAIN COMPONENTS OF HYDRAULIC SYSTEM

部件	Item	Brand Name
溢流阀	Overflow Valve	Rexroth (Germany BOSCH group)
叠加式减压阀	Overlay Pressure Reducing Valve	EATON (U.S.A.)
单向节流阀	One-way Throttle Valve	Gorker (U.S.A.)
伺服比例阀	Linear servo valve	MOOG (U.S.A.) / ATOS(Italy)
三通比例流量插装阀	3-Way proportional flow-rate Cartridge Valve	Rexroth (Germany BOSCH group)
溢流阀插件	Overflow Valve Plug-in	Rexroth (Germany BOSCH group)
CVI插件	CVI Plug-in	EATON (U.S.A.)
压力管路过滤器	Pressure pipe filter	HYDAC (Germany)
离心泵	Centrifugal Pump	Calpeda (Italy)
轴向柱塞变量泵	Plunger variable delivery pump	Rexroth (Germany BOSCH group) / Eaton(U.S.A)
溢流阀	Overflow Valve	EATON (U.S.A.)
电磁方向控制阀	Electromagnetic directional control valve	EATON (U.S.A.)/ Rexroth (Germany)
回油过滤器	Return Filter	HYDAC (Germany)
密封件	Slydring/Dust-proofer/Seal ring /Glyd ring/Stepseal/etc.	TRELLEBORG (Germany)

■ 合作品牌 / Honor supplier



使用的主泵是传统公认的全球最好的德国力士乐公司A4VSO恒功率变量轴向柱塞泵，它具有极高的可靠性和寿命。设计中主泵有另一离心泵压力供油，避免泵发生吸空现象，以保证泵的最长使用寿命。

The main pump is publicly recognized as the world's best pump: the A4VSO constant power variable-displacement pump made by Rexroth in Germany. The pump has extremely high reliability and long working life. Moreover, in order to avoid the oil suction and to improve the working life of the pump, another centrifugal pump is installed on the right side of the pump for the purpose of oil feeding

标配液压泵站主要由以下元器件组成:

- 集油箱
- 恒功率变量轴向柱塞泵
- 供油离心泵
- 12微米过滤器
- 带油路控制及稳压阀组的阀块
- 防尘隔音柜

Hydraulic control unit is consisting of the following main components:

- Pressurised tank
- Constant power variable capacity main pump
- Centrifugal pump
- 12-micron hydraulic oil filter
- Oil control and pressure regulator valves block unit
- Soundproof cabinet
- Heat exchanger for cooling the oil (at customer's charge)



■ 双缸伺服顶出系统 / Intelligent control system



基于PC-PLC平台的图形化设计触屏操作系统，运算处理功能更加精准，功能更强大。

The new generation of advanced PC-PLC control system makes the operations faster, simpler and clearer. The cycle of the press is controlled with a special CPU which connects the system to each control unit box via cables.

可以方便地调取并输出以下等信息:

- 料车、压制、横梁及压制工作循环等所有相关参数
- 实时显示压制曲线
- 对每一个工作参数进行解释和说明的帮助窗口
- 同步显示重要元件的工作状况曲线（如电磁阀、伺服比例阀、传感器等所有输入输出信号）
- 可调取压机不同时段，选择任意输入输出信号制作图表，分析、比较相关信号的状态
- All relevant parameters such as feeders, strokes, beams and pressing working cycles;
- Real time graphs of cylinder pressure trend and axes positions;
- help window which demonstrates each working parameter;
- Simultaneous display of the conditions of each working elements (such as solenoid valves, servo proportional valves, sensors, etc.);
- All the press data in the press, including operating manuals, spare parts manuals, electrical and hydraulic diagrams; etc.
- Real time automatic cycle diagram: the working curve of each sensor, solenoid valve and proportional valve; etc. According to these curves, the working cycle of the press can be monitored or detected to help find out the errors.

■ 压机选型 / Press model collection

Press Parameter 技术参数	Unit	MPE 2900	MPE 3000L	MPH 3800L	MPE 4300L	MPH 5200	MPE 8300	MPE 8900	MPE 18000	MPE 29000
Max pressing power 最大压制力	kN	29,000	30,000	38,000	43,000	52,000	83,000	89,000	180,000	290,000
Clearance between columns 左右立柱间净空	mm	1,750	2,250	180	180	180	220	220	220	3,850
Max plunger stroke 最大动梁行程	mm	160	180	70	70	70	80	80	80	80
Max ejector stroke 顶出缸最大行程	mm	150	150	150	280	280	280	280	400	400
Maximum ejector power 模芯顶出力	kN	90	90	110	110	132	180	200	270	360
power of the main motor 主电机功率	kw	98	98	122	122	143	200	220	300	390
Installed power in motors 电机安装功率	kw	900	900	1,100	1,050	1,200	1,380	1,400	1,800	1,900
Useful width of crossbeam 动梁工作台面宽度	mm	1,200	1,200	1,200	1,350	1,400	1,650	1,650	2,000	2,280
Width of press table 工作台面前后宽度	mm	1,300	1,200	1,300	1,350	1,650	3,500	4,000	6,500	9,000
Oil quantity for hydraulic system 最大装油量	Lt	22	20	20	20	20	18	16	11	8
Number of cycles up to 空循环次数可达	r/min	180 / min	180 / min	200 / min	200 / min	250 / min	350 / min	350 / min	700 / min	800 / min
Oil cooling water (24°C) 冷却水流量	Lt	58	95	100	92	115	195	220	560	700
Weight of the press body 主机重量	ton									

■ 压机排砖表 / Reference table of pressing

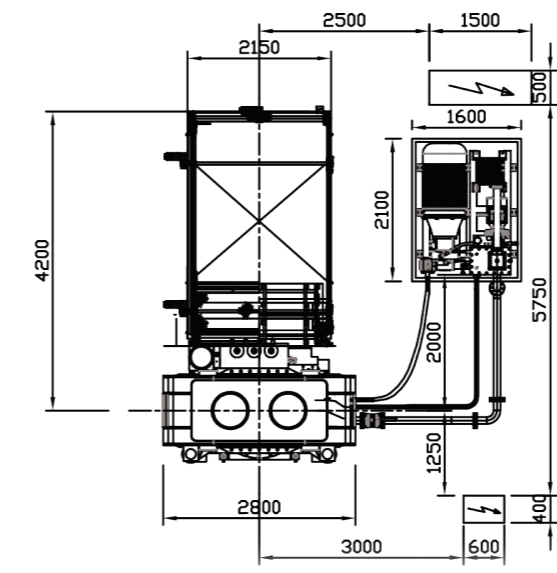
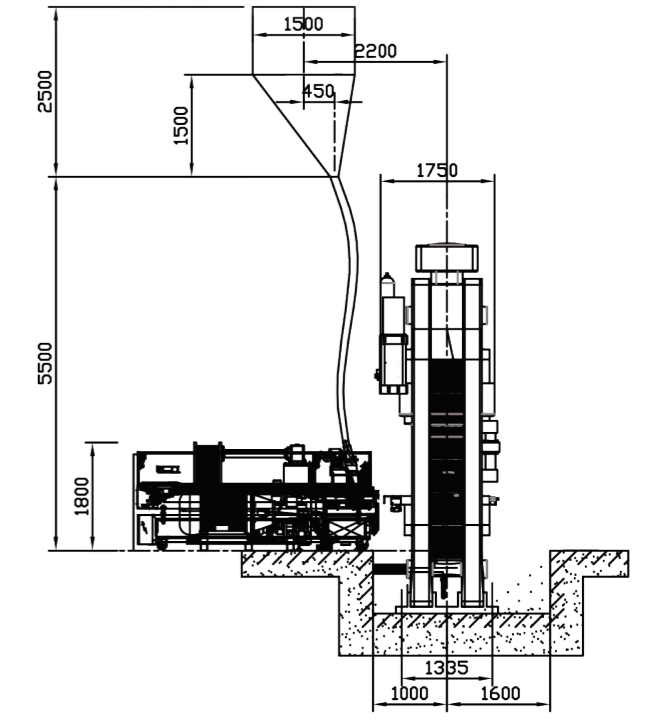
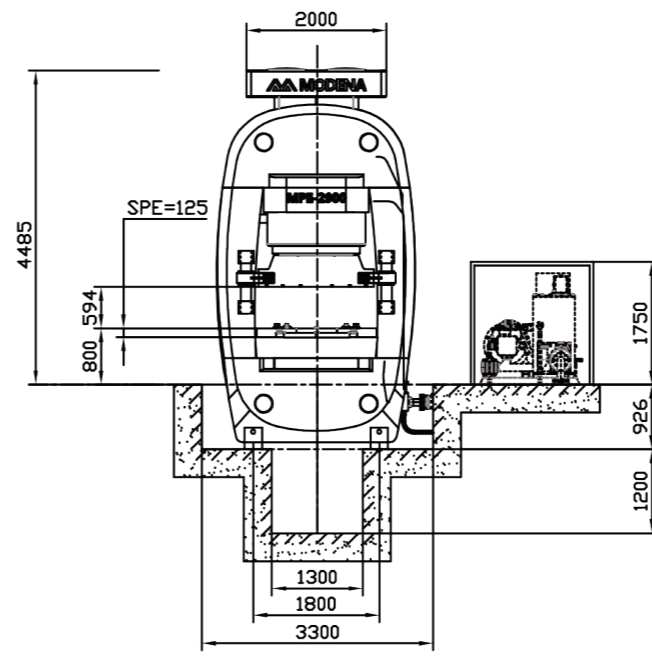
SIZE 规格	Unit 单位	Row 排数	MPE 3000L		MPE 2900		MPE 3800L		MPE 4300L		MPH 5200	MPE 8300	MPE 8900	MPE 18000	MPE 29000	
			WALL	Floor	WALL	Porcelain	WALL	Floor	Floor	Porcelain	Floor	Porcelain	Porcelain	Porcelain	Porcelain	Porcelain
			墙砖	地砖	墙砖	瓷质砖	墙砖	地砖	地砖	瓷质砖	地砖	瓷质砖	瓷质砖	瓷质砖	瓷质砖	瓷质砖
200 x 200	mm	single	8	8	6	6	--	--	--	--	--	--	--	--	--	
200 x 200	mm	double	16	--	12	--	--	--	--	--	--	--	--	--	--	
200 x 300	mm	single	8	8	6	6	--	--	--	--	--	--	--	--	--	
200 x 300	mm	double	16	--	12	--	--	--	--	--	--	--	--	--	--	
200 x 400	mm	single	8	--	6	6	--	--	--	--	--	--	--	--	--	
250 x 330	mm	single	7	6	5	5	--	--	--	--	--	--	--	--	--	
250 x 400	mm	single	7	6	5	5	--	--	--	--	--	--	--	--	--	
300 x 300	mm	single	6	5	4	4	6	6	4	4	--	--	--	--	--	
300 x 300	mm	double	10	8	8	6	12	8	8	6	--	--	--	--	--	
300 x 450	mm	single	6	5	4	4	6	6	4	4	--	--	--	--	--	
300 x 600	mm	single	5	4	4	3	5	5	4	4	4	4	--	--	--	
300 x 900	mm	single	2	1	1	1	1	1	1	1	3	2	--	--	--	
300 x 900	mm	double	--	--	2	2	2	2	2	2	3	2	--	--	--	
350 x 700	mm	single	4	--	3	--	5	5	4	4	3	3	--	--	--	
330 x 600	mm	single	5	3	4	4	5	5	3	3	3	3	--	--	--	
400 x 400	mm	single	4	4	3	3	4	4	2	--	3	3	4	--	--	
400 x 800	mm	single	2	--	2	--	2	2	3	3	3	2	4	--	--	
450 x 450	mm	single	4	3	3	2	3	3	2	2	3	3	--	--	--	
500 x 500	mm	single	2	2	2	2	3	3	1	--	3	2	3	--	--	
500 x 1000	mm	single	1	--	1	--	1	1	2	2	2	1	2	--	--	
600 x 600	mm	single	2	2	2	1	2	2	2	1	2	2	3	--	--	
600 x 900	mm	single	--	--	1	1	2	2	1	1	2	1	2	2	--	
600 x 1200	mm	single	--	--	1	--	1	1	1	1	1	1	2	2	4	
800 x 800	mm	single	--	--	1	--	1	1	1	1	1	1	2	2	3	
800 x 1600	mm	single	--	--	--	--	--	--	1	--	1	1	1	1	2	
900 x 900	mm	single	--	--	--	--	--	--	1	--	1	1	2	2	2	
900 x 1800	mm	single	--	--	--	--	--	--	--	--	--	--	1	1	1	
1000 x 1000	mm	single	--	--	--	--	--	--	--	--	--	--	1	1	2	
1200 x 1200	mm	single	--	--	--	--	--	--	--	--	--	--	1	1	2	
1800 x 1200	mm	single	--	--	--	--	--	--	--	--	--	--	1	1	1	
2000 x 1000	mm	single	--	--	--	--	--	--	--	--	--	--	1	1	1	
800 x 2600	mm	single	--	--	--	--	--	--	--	--	--	--	--	1	2	
2400 x 1200	mm	single	--	--	--	--	--	--	--	--	--	--	--	1	1	
1000 x 3000	mm	single	--	--	--	--	--	--	--	--	--	--	--	--	1	
3200 x 1600	mm	single	--	--	--	--	--	--	--	--	--	--	--	--	1	

说明：一般墙砖成型压力为250kgf/cm2,烧成后收缩率为0%；一般地砖成型压力为330kgf/cm2,烧成后收缩率为6%；一般瓷质砖成型压力为410kgf/cm2,烧成后收缩率为9%。

Reference criterion: Wall tile compating pressure 250kg/cm2, shrinkage 0%; Floor tile compating pressure 330kg/cm2, shrinkage 6%; Porcelain tile compating pressure 410kg/cm2, shrinkage 9%;



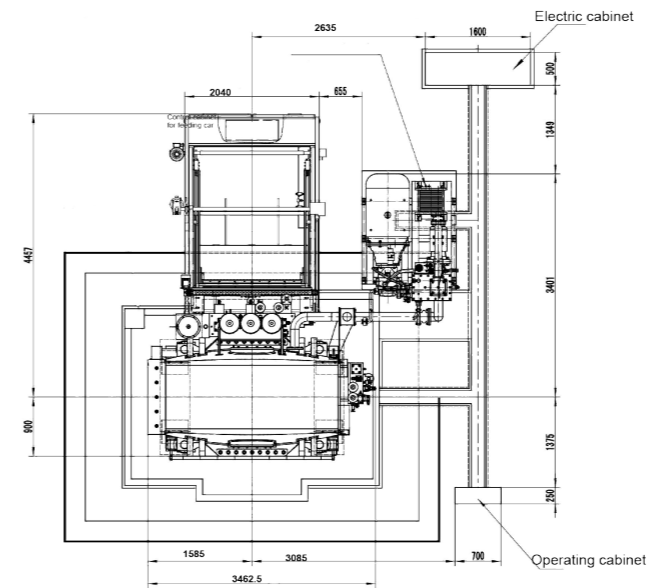
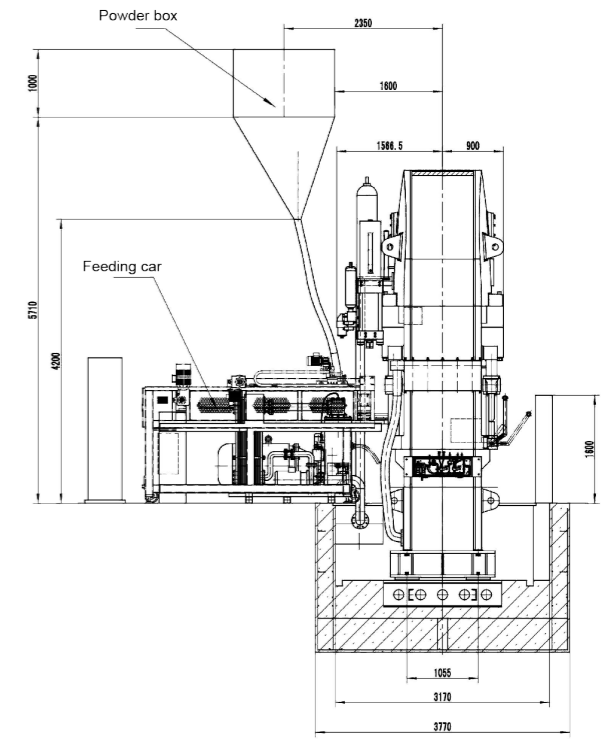
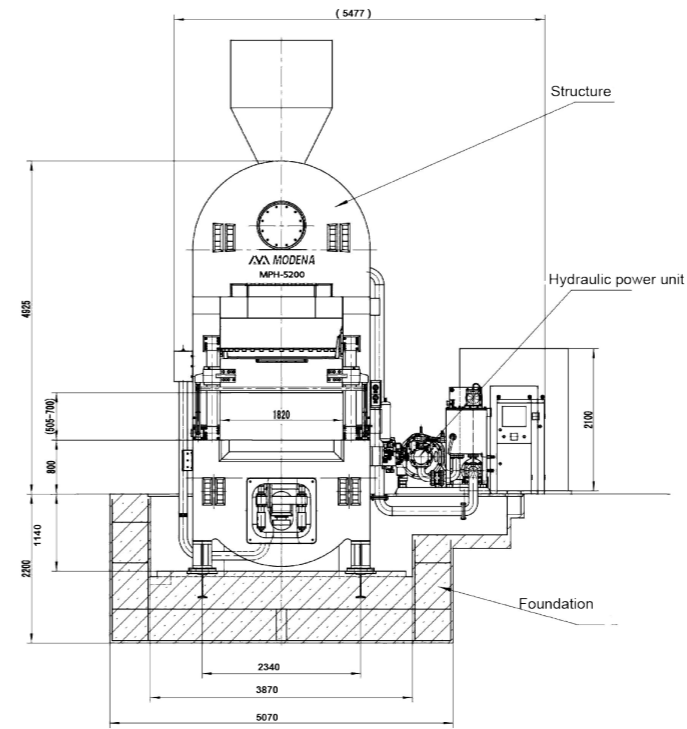
MPE-2900



技术参数	Press Parameter	Unit	MPE 2900
最大压制力	Max pressing power	kN	29,000
左右立柱间净空	Clearance between columns	mm	1,750
最大动梁行程	Max plunger stroke	mm	160
顶出缸最大行程	Max ejector stroke	mm	70
模芯顶出力	Maximum ejector power	kN	150
主泵电机功率	power of the main motor	kw	90
电机安装功率	Installed power in motors	kw	98
动梁工作台面宽度	Useful width of crossbeam	mm	900
工作台面前后宽度	Width of press table	mm	1,200
最大装油量	Oil volume for hydraulic system	Lt	1,300
空循环次数可达	Number of cycles up to	r/min	22
冷却水流量	Oil cooling water (24°C)	Lt	180/min
主机重量	Weight of the press body	ton	58



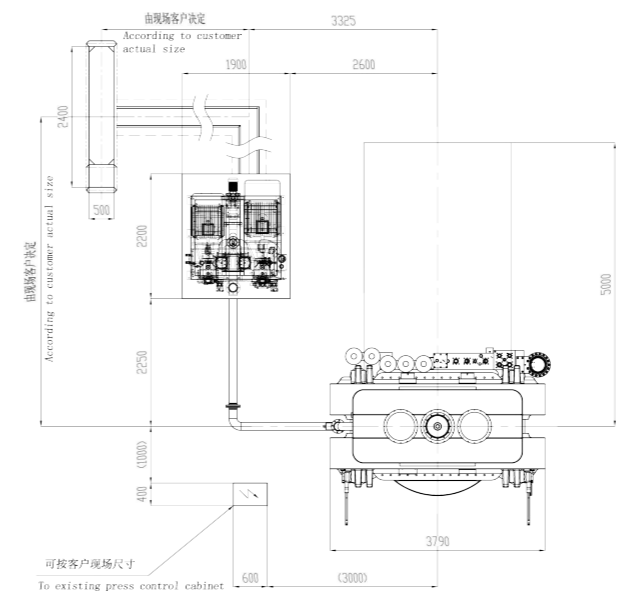
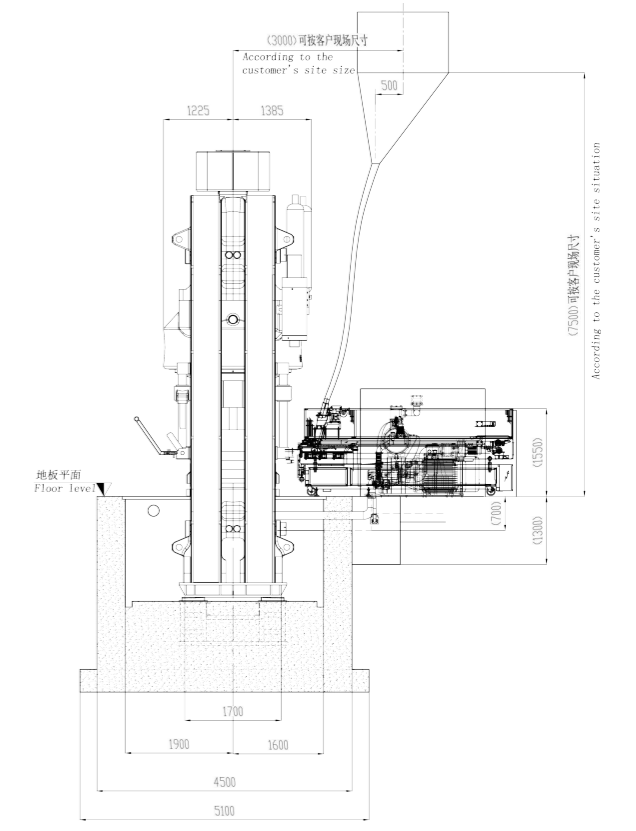
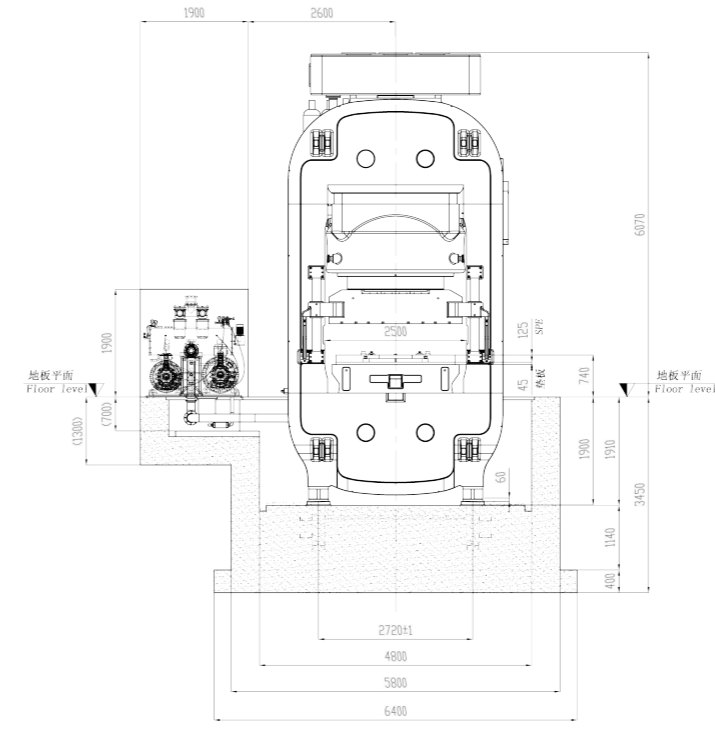
MPH-5200



技术参数	Press Parameter	Unit	MPH 5200
最大压制力	Max pressing power	kN	52,000
左右立柱间净空	Clearance between columns	mm	1,820
最大动梁行程	Max plunger stroke	mm	180
顶出缸最大行程	Max ejector stroke	mm	80
模芯顶出力	Maximum ejector power	kN	280
主泵电机功率	power of the main motor	kw	132
电机安装功率	Installed power in motors	kw	143
动梁工作台面宽度	Useful width of crossbeam	mm	1,200
工作台面前后宽度	Width of press table	mm	1,400
最大装油量	Oil volume for hydraulic system	Lt	1,650
空循环次数可达	Number of cycles up to	r/min	20
冷却水流量	Oil cooling water (24°C)	Lt	250/min
主机重量	Weight of the press body	ton	115



MPE-8900



技术参数	Press Parameter	Unit	MPE 8900
最大压制力	Max pressing power	kN	89,000
左右立柱间净空	Clearance between columns	mm	2,500
最大动梁行程	Max plunger stroke	mm	220
顶出缸最大行程	Max ejector stroke	mm	80
模芯顶出力	Maximum ejector power	kN	280
主泵电机功率	power of the main motor	kw	200
电机安装功率	Installed power in motors	kw	220
动梁工作台面宽度	Useful width of crossbeam	mm	1,400
工作台面前后宽度	Width of press table	mm	1,650
最大装油量	Oil volume for hydraulic system	Lt	4,000
空循环次数可达	Number of cycles up to	r/min	16
冷却水流量	Oil cooling water (24°C)	Lt	350/min
主机重量	Weight of the press body	ton	220